

# **SoftStuff Wallpaper and Screen Saver**

## **Help Contents**

**Configuring the Wallpaper**

**Configuring the Screen Saver**

**Edit Sets**

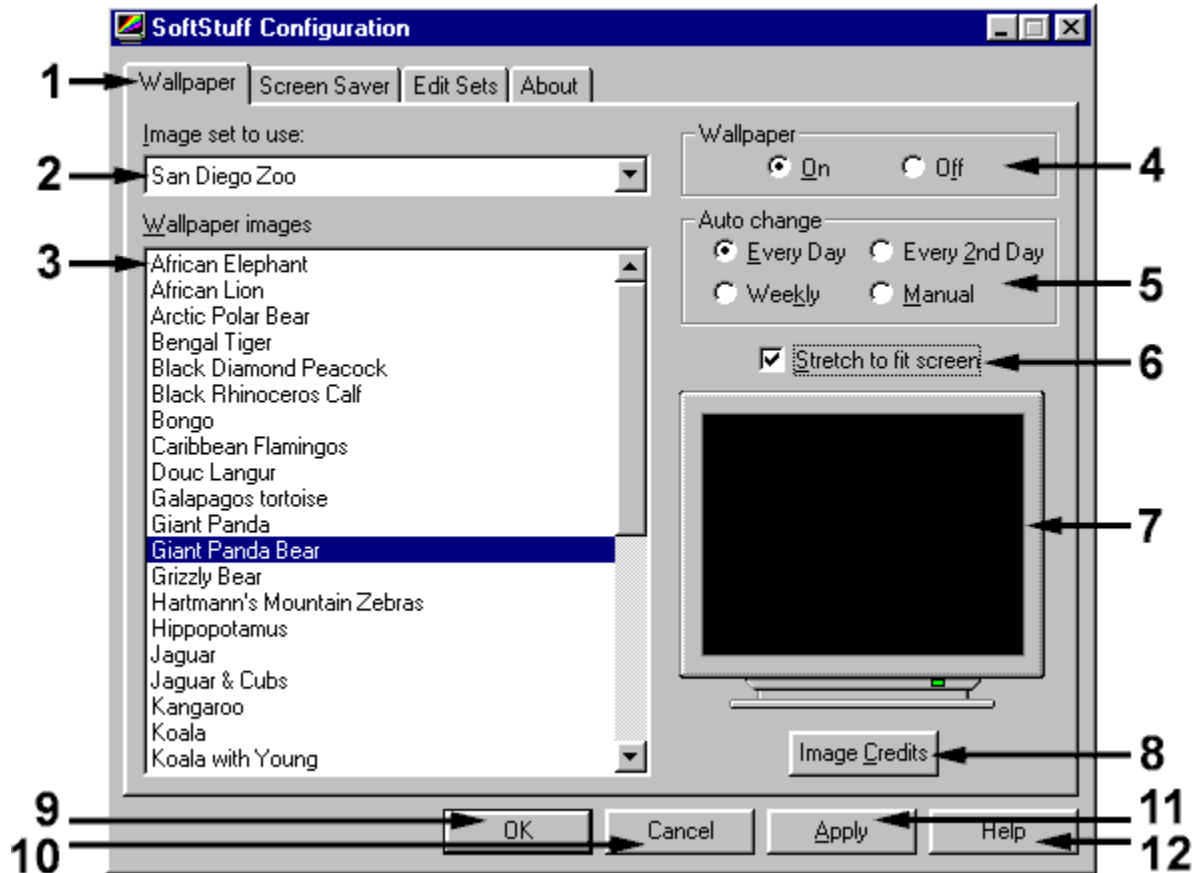
**About SoftStuff**

**Questions and Answers**

**Getting Help**

## Configuring the Wallpaper

Wallpaper is the image that stays on your computer desktop as a background for your Windows programs. The Wallpaper dialog lets you manually select a particular image for view or set how frequently you would like the wallpaper to change automatically.



1. Click on the **Wallpaper** tab to see the wallpaper options.
2. Lets you select which set of images to use as your wallpaper. Click the down arrow on the **Image set to use** drop-down list box and select an item. If you only have one SoftStuff Screen Saver and Wallpaper set installed, only one item appears in the drop-down list box.

Note: If you have more than one set of images installed on your computer and would like for the system to randomly rotate through all of your sets, select "All Image Sets" from the **Image set to use** drop-down list box.

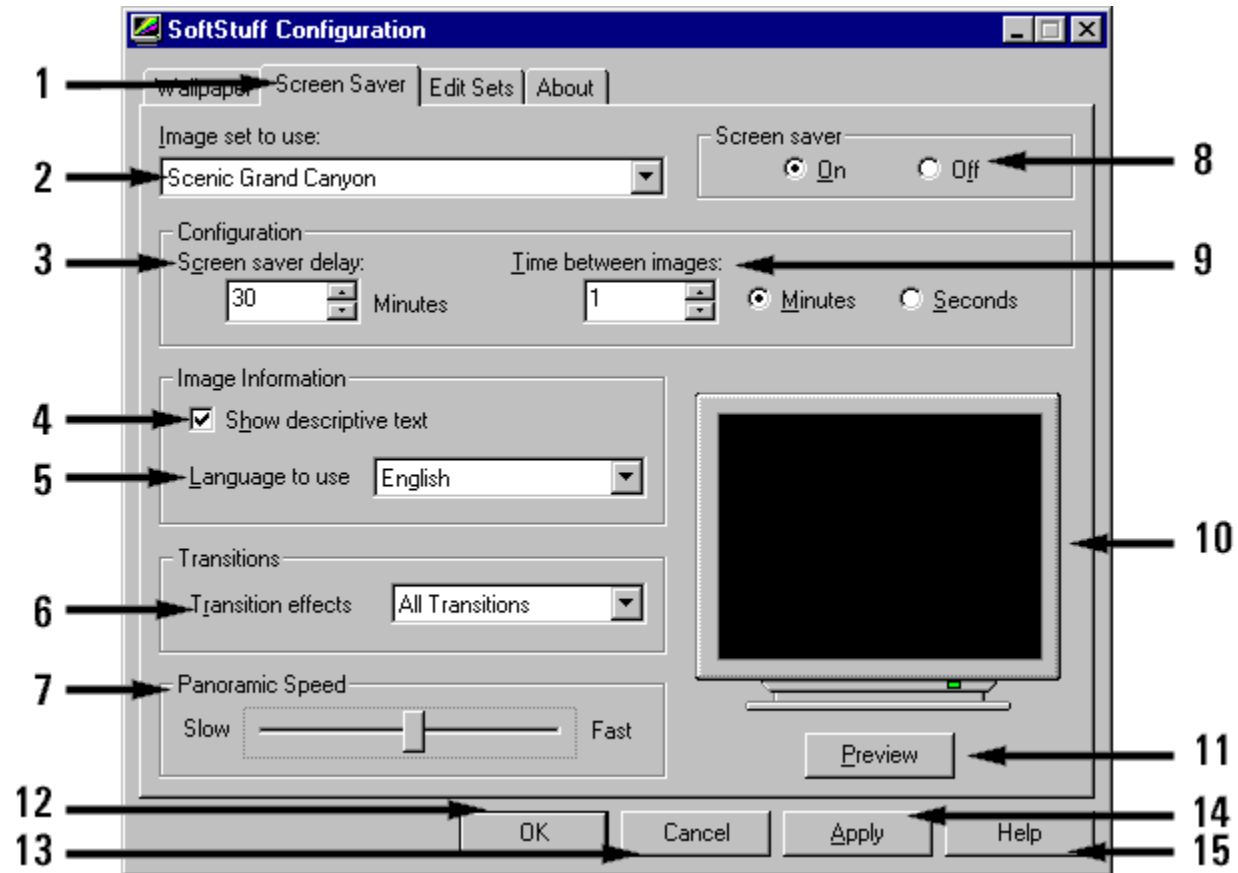
3. The **Wallpaper images** box lists the images in the selected set. You can manually change your wallpaper by selecting an image in this list and clicking **Apply** or **OK**.

Note: If you have selected "All Image Sets," you will only see a list of the image sets that will be used. You cannot manually change your wallpaper while "All Image Sets" is selected. To manually change the wallpaper, select the image set that contains the image you wish to use for wallpaper in the **Image set to use** drop-down list. Select the image in the **Wallpaper images** box, click **Apply**, and change the **Image set to use** back to "All Image Sets," and click **OK**.

4. If you don't want to use SoftStuff's wallpaper feature, select "Off" in the **Wallpaper** section.
5. To set how often your wallpaper automatically changes, select the appropriate button in the **Auto change** section: **Every Day**, **Every 2nd Day**, or **Once a Week**. With the **Manual** option button selected, the same wallpaper image stays on your desktop until you run the SoftStuff Configuration program again and select a new wallpaper image.
6. If you want the wallpaper and screen saver images to fill your screen, check the **Stretch to fit screen** box. The wallpaper and screen saver images will stretch to fit any screen resolution up to 1024 by 768 pixels. Not stretched, the images are 640 by 480 pixels. (To see what resolution and color settings your computer is using, click the **About** tab.)
7. The thumbnail viewer displays images selected in the Wallpaper images box.
8. The **Image Credits** button shows you information about the currently selected image.
9. The **OK** button automatically applies the configuration of the wallpaper and/or screen saver to what you have selected and closes the SoftStuff Configuration program. Make sure you have configured both the Wallpaper and Screen Saver before clicking **OK**.
10. The **Cancel** button ignores the changes you have made in the SoftStuff Configuration program and closes it.
11. The **Apply** button changes the configuration of the wallpaper or screen saver to what you have selected, but the SoftStuff Configuration program remains open. This is quite useful when you want to browse through the images or try different settings.
12. The **Help** button opens the SoftStuff online help file.

## Configuring the Screen Saver

The Screen Saver waits for a period of inactivity on your computer before it automatically cycles through your image set(s), displaying one image at a time. The Screen Saver stops when you move the mouse or press a key on the keyboard. The **Screen Saver** dialog enables you to configure your screen saver by changing the delay time, time between images, transition effects, and language (if applicable).

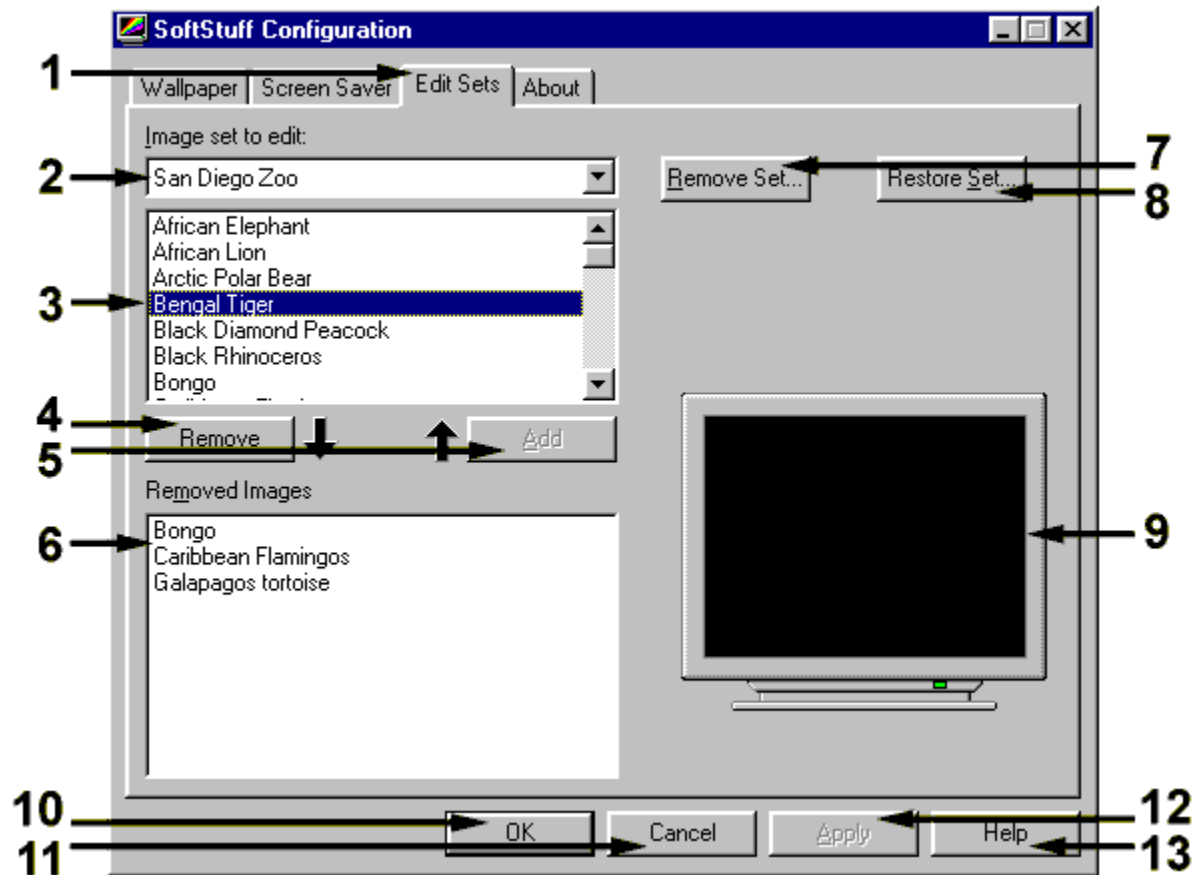


1. Click the **Screen Saver** tab to see the SoftStuff Screen Saver options.
2. To select the set of images for the Screen Saver to use, click on the **Image set to use** drop-down list box and select an item. If you only have one SoftStuff Screen Saver and Wallpaper set installed, only one item appears in the drop-down list.  
  
Note: If you have more than one set of images installed on your computer and would like for the system to randomly rotate through all of your sets, select "All Image Sets" from the **Image set to use** drop-down list box.
3. To determine the time in minutes your system must be inactive (no keyboard or mouse input) before the Screen Saver starts, set the **Screen saver delay**. This can be set from 1 to 60 minutes.
4. The image text that displays while the screen saver is active can be turned on and off by checking the **Show descriptive text** box. The text will display for about 20 seconds. (Some images may not show any text even though this option is checked.)

5. Select the desired language for the **descriptive text** by clicking on the **Text language** drop-down list box.
6. Several transition options are available in the **Transitions** drop-down list. If you prefer, you can select "All Transitions" to have the screen saver cycle through all of the available transitions. Try them out and see which you like the best.
7. To determine the rate at which the screen saver pans each image, drag the **panoramic speed slider** to the desired speed.
8. The **Screen saver** option buttons let you turn on or off the SoftStuff Screen Saver. To assign another screen saver to your system, you must do it through Windows Control Panel, Display Properties, Screen Saver.
9. The Screen Saver cycles through each image, pausing for an interval you determine by setting the **Time between images**. The SoftStuff Screen Saver will display the next image after this much time has elapsed. This can be set from 10 seconds to 60 minutes. To select minutes or seconds, click the appropriate button.
10. The thumbnail viewer displays images from the selected image set(s).
11. To see what the screen saver will look like, click the **Preview** button. After previewing, press any key or move the mouse to return to the configuration program.
12. The **OK** button automatically applies the configuration of the wallpaper and/or screen saver to what you have selected and closes the SoftStuff Configuration program. Make sure you have configured both the Wallpaper and Screen Saver before clicking **OK**.
13. The **Cancel** button ignores the changes you have made in the SoftStuff Configuration program and closes it.
14. The **Apply** button changes the configuration of the wallpaper and/or screen saver to what you have selected, but the SoftStuff Configuration program remains open. This is quite useful when you want to browse through the images or try different settings.
15. The **Help** button opens the SoftStuff online help file.

## Edit Sets

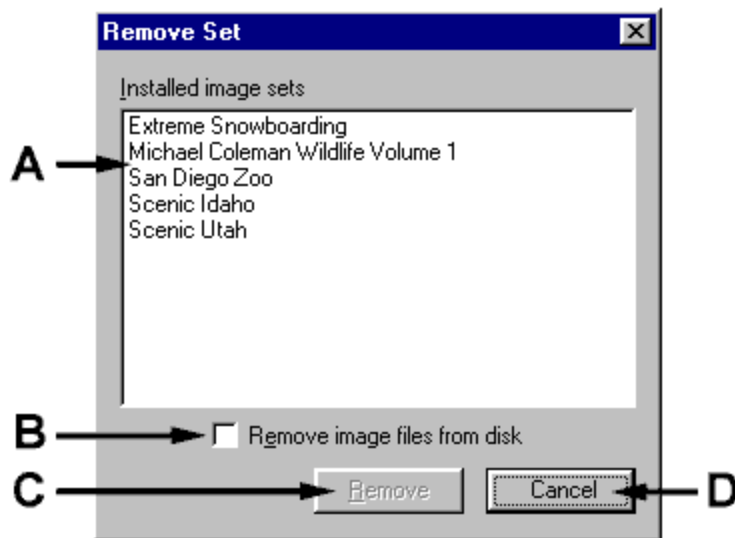
Edit Sets allows you to remove and restore images from an image set, and to delete and restore complete sets of images.



1. Click on the **Edit Sets** tab to see the wallpaper options.
2. You first need to select which set of images you want to edit. Click the down arrow on the **Image set to edit** drop-down list box and select an item. If you only have one SoftStuff Screen Saver and Wallpaper set installed, only one item appears in the drop-down list box.
3. The images box lists the images in the selected set. Click on the title of an image to select that image.
4. Click the **Remove** button to remove the currently selected image (this image will be listed in the **Removed Images** box below (see 6 below). This image will not be available to be used as wallpaper and will not appear as a screen saver image.
5. Click the **Add** button to return a selected image from the **Removed Images** box (see 6 below) to the image set. This image will again be available to be used as wallpaper and will appear as a screen saver image.
6. The **Removed Images** box lists the images that have been removed from the selected image set. These images will not be available to be used as wallpaper and

will not appear as a screen saver image.

7. The **Remove Set** button allows you to remove an entire image set from the image sets that are available in the **Image set to use** drop-down lists on the **Wallpaper** and **Screen Saver** tabs. You have the option of either temporarily removing the set (this is good to use if you want to discontinue the use of one or more sets when you have **All Image Sets** selected for Wallpaper and/or Screen Saver) or permanently removing the set from your hard drive.
  - A. **Installed image sets** lists all installed image sets.
  - B. The **Remove image files from disk** option will completely uninstall an image set from your computer by deleting the image files from your hard drive. You will not be able to restore this set unless you reinstall it from the original CD-ROM.
  - C. The **Remove** button removes the selected set.
  - D. The **Cancel** button closes the **Remove Set** window.

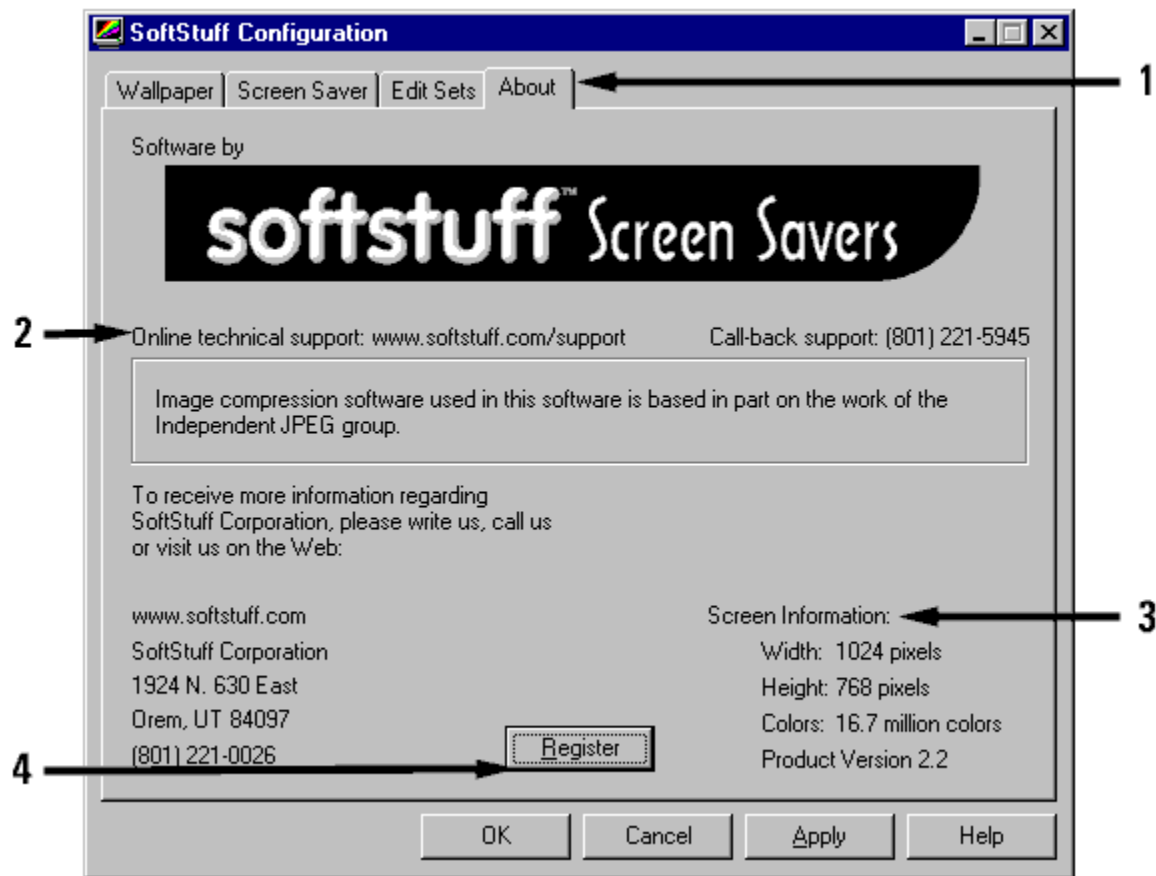


8. The **Restore Set** button allows you to restore any temporarily deleted image sets. This will then make them available in the **Image set to use** drop-down lists on the **Wallpaper** and **Screen Saver** tabs. In the **Restore Set** dialog box select the image set you wish to restore and click on **Restore**.
9. The thumbnail viewer displays images from the selected image set(s).
10. The **OK** button automatically applies the configuration of the wallpaper and/or screen saver to what you have selected and closes the SoftStuff Configuration program. Make sure you have configured both the Wallpaper and Screen Saver before clicking **OK**.
11. The **Cancel** button ignores the changes you have made in the SoftStuff Configuration program and closes it.
12. The **Apply** button changes the configuration of the wallpaper or screen saver to what you have selected, but the SoftStuff Configuration program remains open. This is quite useful when you want to browse through the images or try different settings.

13. The **Help** button opens the SoftStuff online help file.



## About SoftStuff



1. Click on the **About** tab to see program and system details.
2. The **technical support** phone number is: (801) 2215945. Online technical support is also available by going to: [www.softstuff.com](http://www.softstuff.com).
3. The **Screen Information** indicates your current screen area and the number of colors that your monitor is displaying. Should you need technical support, give the product version number to a technical support engineer.
4. With **online registration**, you can use your modem to register your SoftStuff Screen Saver online. Registration ensures that you receive product support, product update information, and other benefits. The process only takes a few minutes to complete.

## Questions and Answers

- Q. *The images don't look very good on my screen. How can I make them look better?*
- A. You must set your monitor to display 256 or more colors (high color or true color is best). The SoftStuff Configuration program will show you how many colors you are running by selecting the **About** tab. The screen information is listed in the upper right corner of the program dialog box.
- Q. *How do I change my monitor to display 256 or more colors?*
- A. The ability to display 256 or more colors is hardware and software dependent. Please consult your hardware documentation to see if your system is capable of displaying 256 colors. Also, check your Windows documentation or the documentation that accompanied your graphics card to find the correct software driver for your system. SoftStuff cannot supply hardware or software to make your system display 256 colors.
- Q. *How do I set a password for my screen saver?*
- A. The password is controlled by Windows. Consult your Windows documentation for instructions on setting a password.
- Q. *I have more than one SoftStuff image set installed on my computer. How can I set the wallpaper and screen saver to cycle through all images from all of the sets?*
- A. If you have more than one set of images installed on your computer and would like for the system to randomly rotate through all of your sets, select "All Image Sets" from the **Image set to use** drop-down list box in either the Wallpaper dialog or Screen Saver dialog, or both.
- Q. *How do I remove a single image or more from an image set?*
- A. Start the SoftStuff Configuration program and select the **Edit Sets** tab. Select the set of images to modify in the **Image set to edit** list box. Select the image you want to remove and click the **Remove** button. Remove as many images as you like, then click **Apply** or **OK**. You can add the image back to the set by selecting it in the **Removed Images** box and clicking **Add**.
- Q. *I have several sets of SoftStuff screen savers. I have selected **All Image Sets** for either Wallpaper or Screen Saver, but I would like to temporarily (or permanently) turn one set off. Is there a way to do this?*
- A. Yes. This is done by selecting the **Edit Sets** tab dialog in the SoftStuff Configuration program and then **Remove Set**. Now you can either permanently or temporarily remove any of the installed sets. To temporarily remove a set from display, just highlight it and click on **Remove**. To permanently remove the set from your hard drive, highlight the set, check the **Remove image files from disk** check box, and click **OK**.
- Q. *How do I uninstall the program?*
- A. Click on Start, Settings, Control Panel, Add/Remove Programs. Find SoftStuff Screen Saver in the list and click the Add/Remove button. Follow the on-screen instructions.



## Getting Help

There are several ways to get help for your SoftStuff screen saver. Most of your questions will probably be answered if you have an Internet connection and can go online to the technical support web page. Otherwise we offer callback technical support. SoftStuff callback technical support is offered free for 30 days from your first call for each product purchased. On your first call you will receive a customer personal identification number which you will use for further support within the 30 day period. After the 30 day complimentary support period, you may receive paid support at the cost of \$0.90 per minute which will be billed to your credit card.

SoftStuff callback technical support is offered Monday through Friday, 8:00 a.m. through 5:00 p.m., MST. Please leave your name, daytime phone number and a brief message and we will return your call on or before our next business day.

The technical support phone number is: (801) 2215945

Online technical support is also available by going to:  
[www.softstuff.com](http://www.softstuff.com)

For Email technical support send a description of the problem to:  
Mac Support: [macsupport@softstuff.com](mailto:macsupport@softstuff.com)  
PC Support: [pcsupport@softstuff.com](mailto:pcsupport@softstuff.com)

